

Total Noob Tutorial for flashing BenQ VAD6038

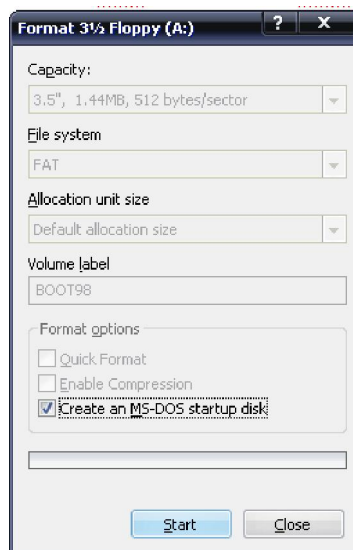
Components needed:

1. DosFlash 1.3b
2. BenQ iXtreme v1.1 firmware
3. Xbox 360 with BenQ drive
4. PCI SATA card with VIA 6421 chipset. I used a Rosewill RC-212.
 - a. <http://www.newegg.com/Product/Product.asp?Item=N82E16816132009>
5. HP USB Disk Storage Format Tool
 - a. <http://www.zshare.net/download/458271232ede9e/>
6. USB thumb drive with Windows 98 boot files
 - a. <http://www.zshare.net/download/4582738b99e128/>

1. Create USB boot disk using the “HP USB Disk Storage Format Tool” and Windows 98 boot files.



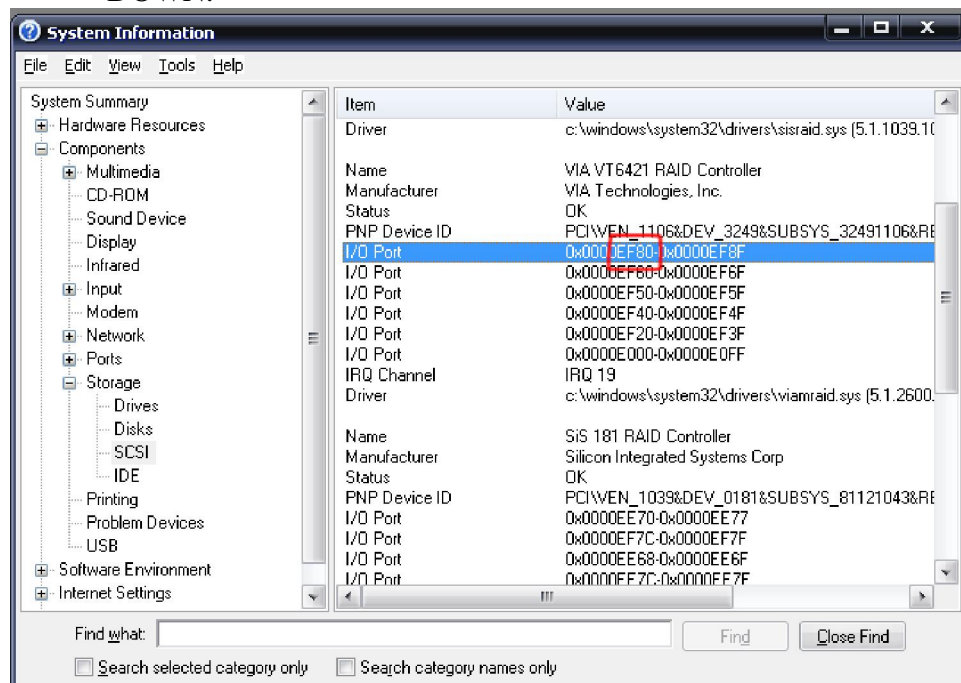
- a. You can also create a Floppy boot disk (though they are less reliable).
 - i. Right click on A:\ > Format > Tick “Create MS-DOS Startup Disk” > Start.



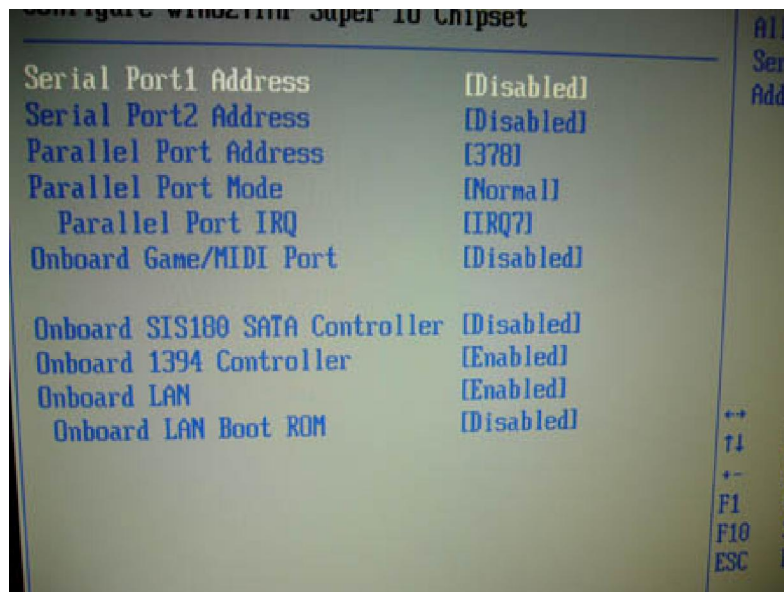
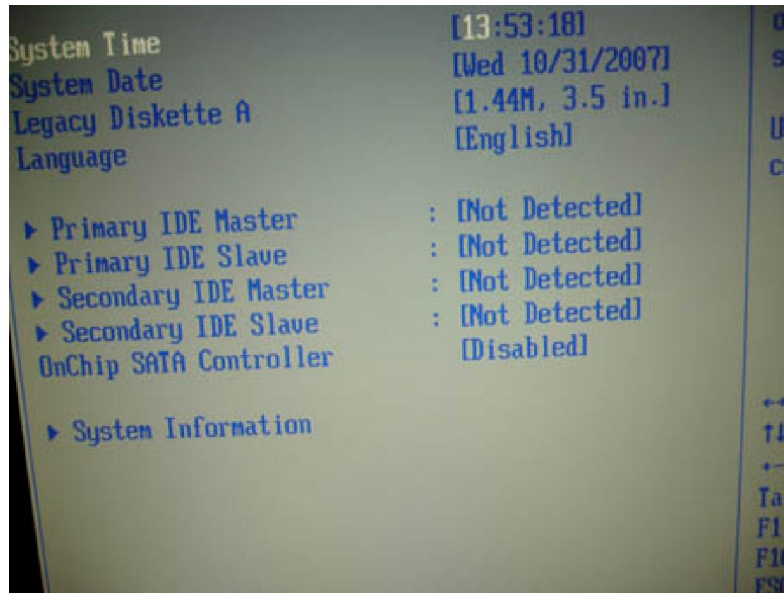
2. Copy over contents from DosFlash16 folder to your boot disk.
3. Dismantle Xbox 360 using available guides.
4. Power down computer and connect PCI SATA card.
5. Connect a SATA cable between the Xbox 360 and the first port on your SATA card (the port will be labeled).
 - a. Make sure you level out the voltage between the 360 and computer either by letting their metal cases touch or connect the two with croc clips.



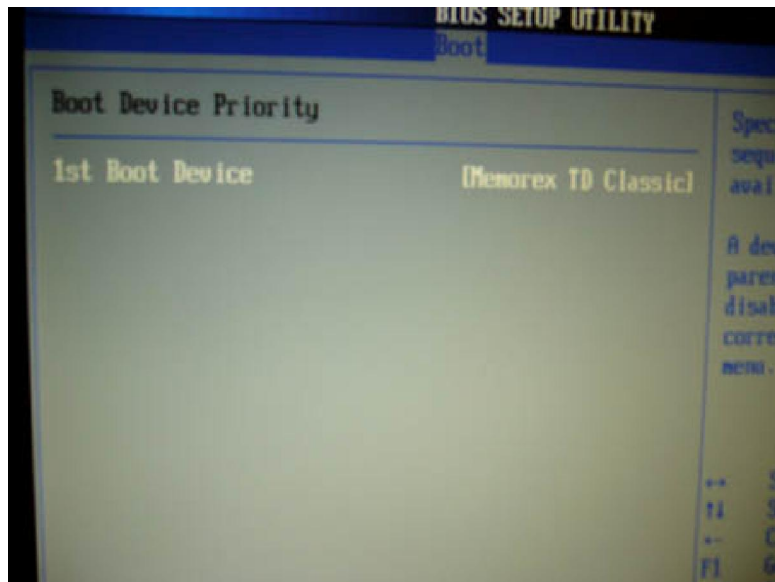
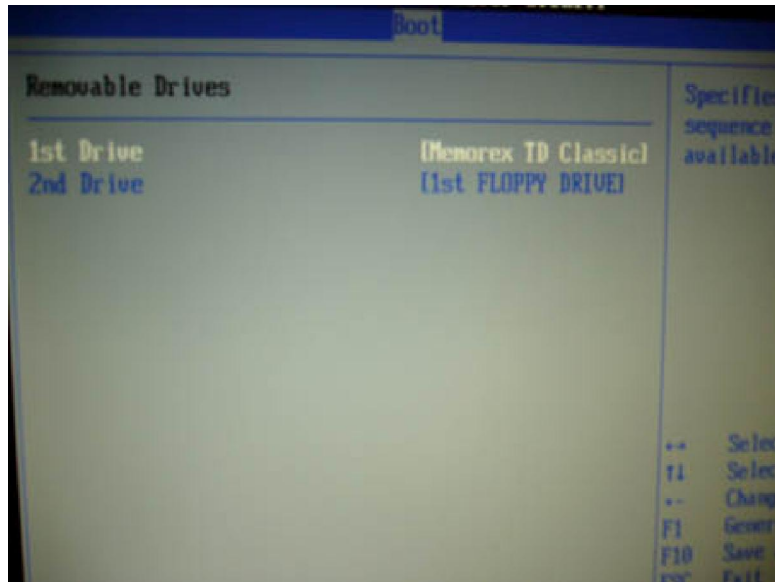
6. Reboot computer and install the accompanied drivers for the SATA card.
7. Next find your SATA card's I/O port by going to (Start > Run > msinfo")
 - a. Locate your port number by expanding (Components > Storage > SCSI)
 - b. Locate your four number port number. In my case, it is EF80. WRITE IT DOWN.



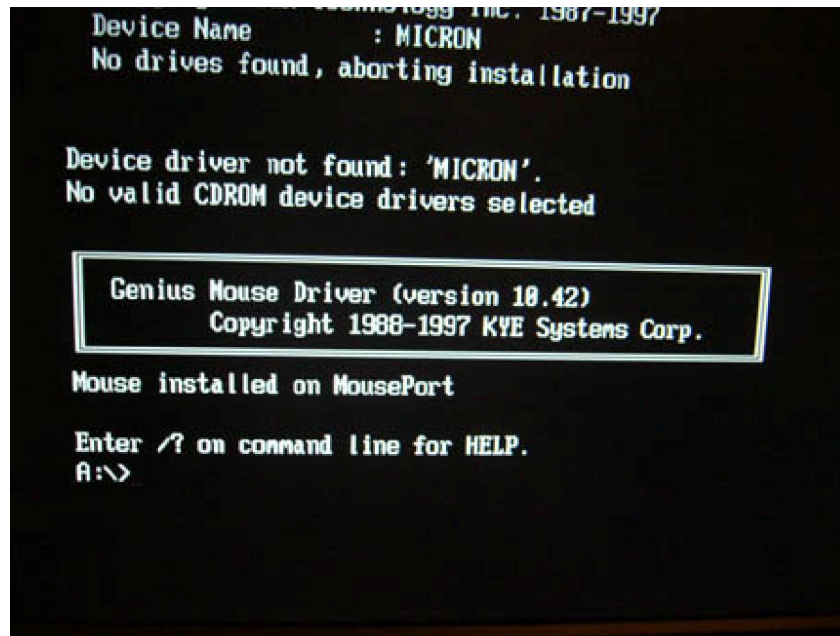
8. Shut down computer and disconnect all IDE and SATA devices (hard drives, etc.)
9. Boot computer and enter BIOS (usually DEL at startup).
 - a. Turn off all onboard SATA and IDE devices.



10. Set your bootable USB key as first boot device, save settings, then exit.

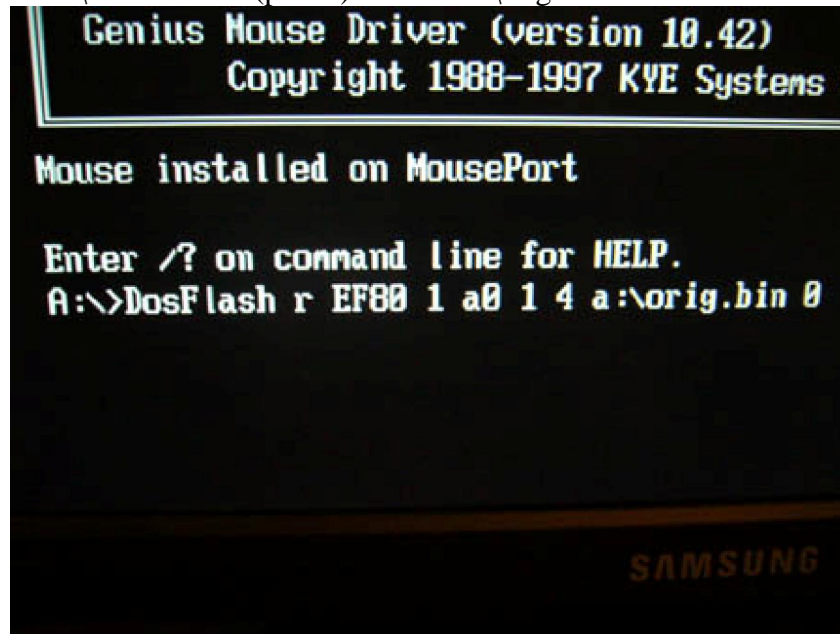


11. You will be greeted with a similar screen to this when booting into DOS.

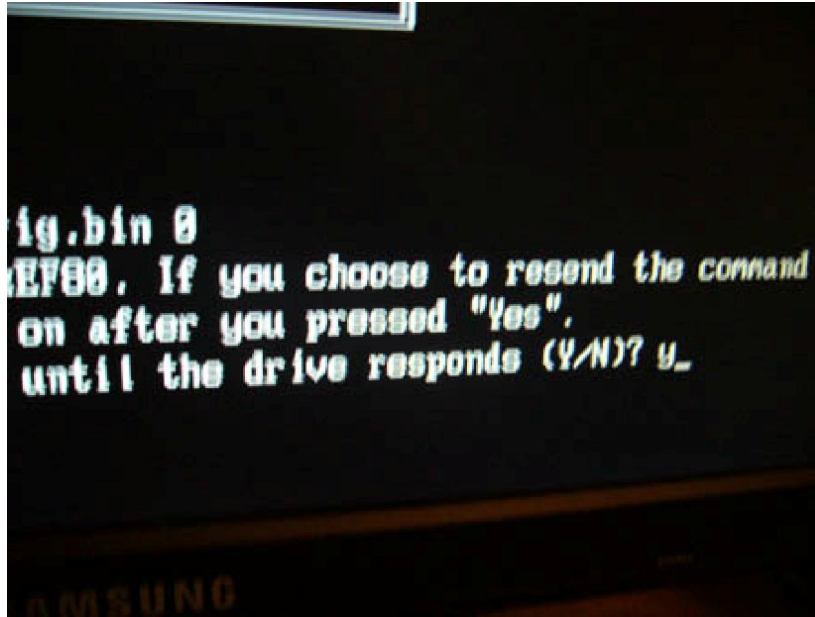


12. Run the DosFlash command to Read/Dump the firmware.

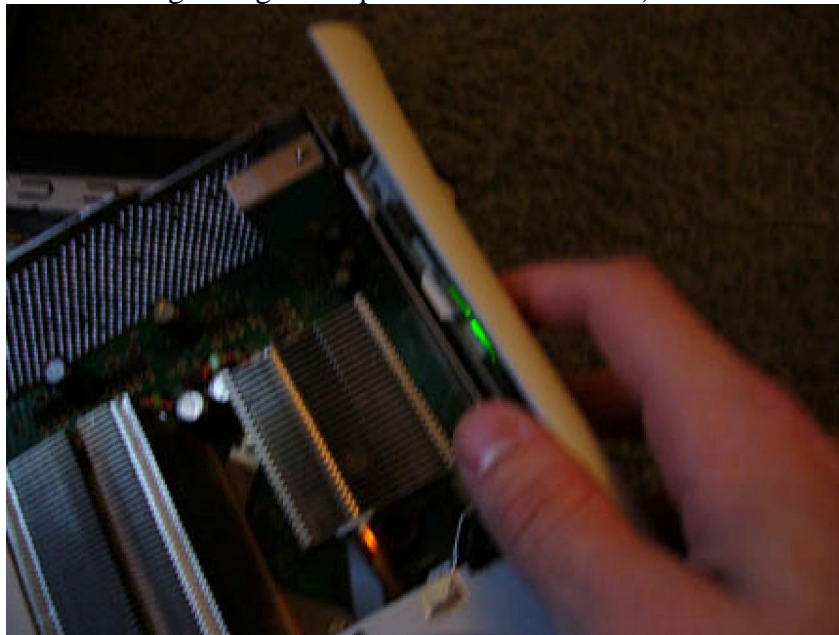
a. A:\>DosFlash r (port #) 1 a0 1 4 a:\orig.bin 0



b. Answer Y to the next question. It will hang on 0x7F.



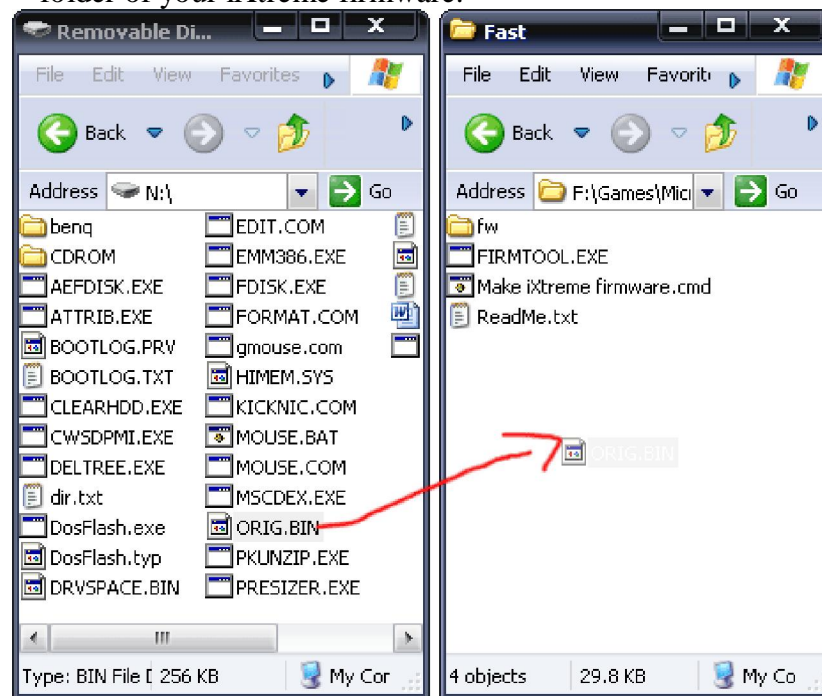
- c. Turn on 360 for 5 seconds (I took the faceplate from my 360 and put it up to the Ring of Light and pushed in to turn it on).



- d. Turn off 360 for 5 seconds
- e. Turn on 360 for 5 seconds. It should begin to dump.
- i. I dumped it several times to ensure it dumped correctly, but it really only requires it once.

```
Enter /? on command line for HELP.  
A:\>DosFlash r EF80 1 a0 1 4 a:\orig.bin 0  
MTK Vendor Intro failed on port 0xEF80. If y  
you should turn the drive off and on after y  
Do you want to resend the command until the  
Status: 0x73  
Reading Bank 0...OK!  
Reading Bank 1...OK!  
Reading Bank 2...OK!  
Reading Bank 3...OK!  
Reading finished! DataSum: 86E9  
  
A:\>
```

13. Shut down your 360 and computer.
14. *This next step may be unnecessary for some of you, but I needed to do it since my XP install is on a SATA drive using onboard SATA.*
 - a. Physically re-connect your hard drives to your computer.
 - b. Turn the SATA and IDE controllers back on in DOS (Just reverse step 9).
15. Reboot into Windows XP and locate your USB disk and iXtreme firmware folder.
 - a. Copy your orig.bin file from your USB disk to either the “Fast” or “Quiet” folder of your iXtreme firmware.



- b. Run the “Make iXtreme firmware.cmd” bat file.

```
C:\WINDOWS\system32\cmd.exe

!      firmtool v1.0 by caster420      !
!-----[360mods.net]-----!

Drive Key:

Original Firmware Version: BenQ UAD6038
iXtreme Firmware Version: BenQ UAD6038

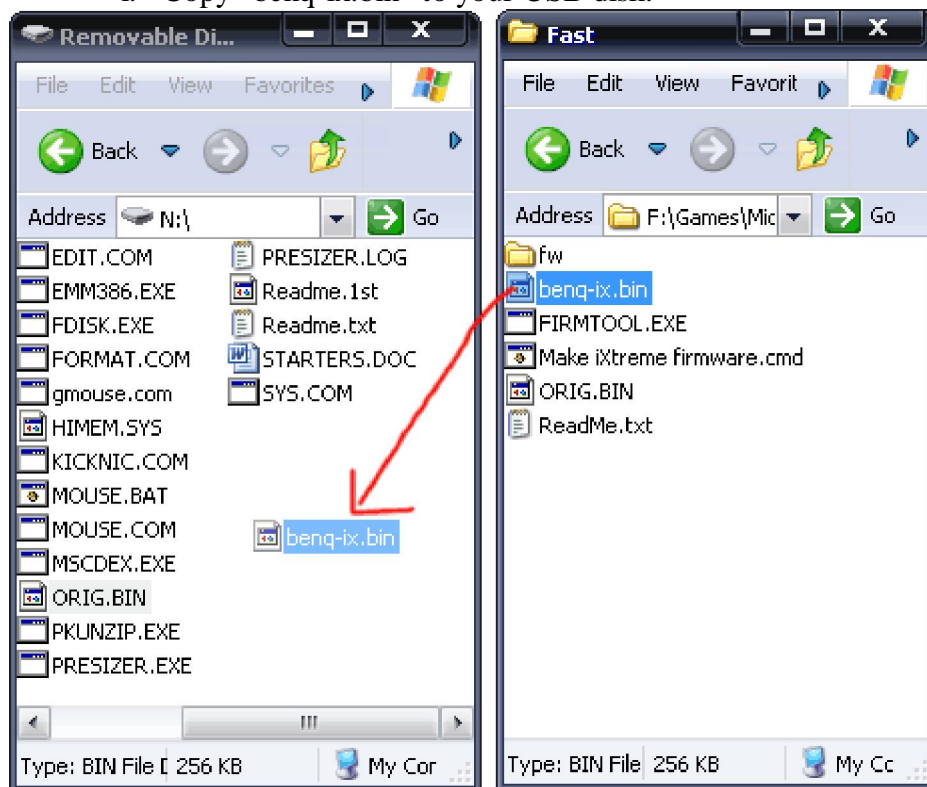
*** SUCCESS ***
Drive key copied.
Drive serial copied.

Your iXtreme firmware is now ready to be flashed!

*****
BenQ iXtreme v1.1 firmware created: benq-ix.bin
*****

Press any key to continue . . . _
```

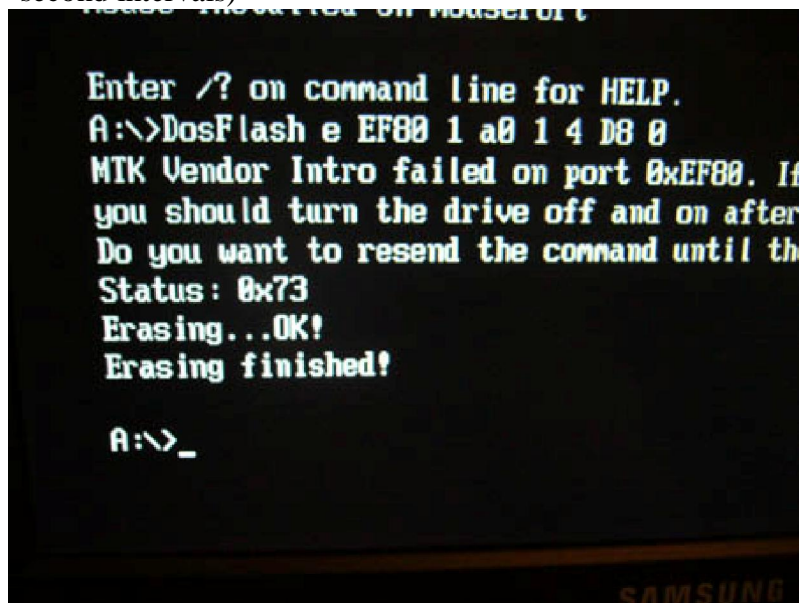
- c. Your new firmware will be named “benq-ix.bin”.
- i. Copy “benq-ix.bin” to your USB disk.



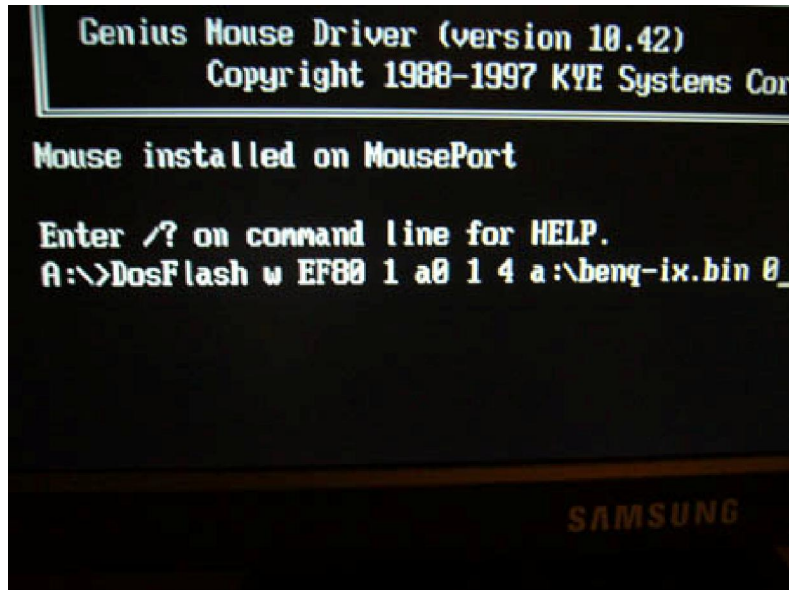
- 16. Reboot computer and turn off all onboard SATA and IDE channels as before.
- 17. Boot into DOS.
- 18. Run the erase command for DosFlash.
 - a. A:\>DosFlash e (port #) 1 a0 1 4 D8 0



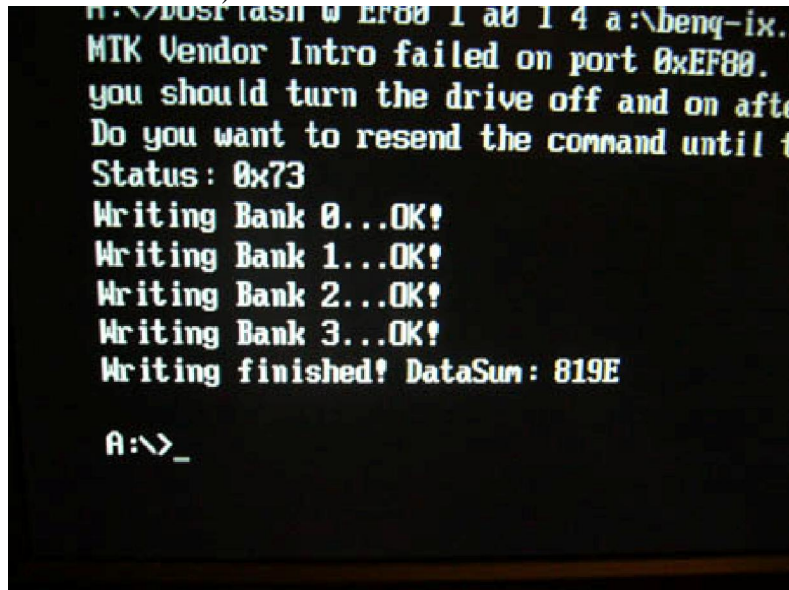
- b. Answer Y to next question.
- c. Turn on 360.
- d. It should begin to erase. If not, follow the same on/off steps as before (5 second intervals)



- 19. Shut down 360 and computer.
- 20. Boot computer into DOS.
- 21. Run the write command for DosFlash.
 - a. A:\>DosFlash w (port #) 1 a0 1 4 a:\benq-ix.bin 0



- b. Answer Y to next question.
- c. Turn on 360.
- d. It should begin to write. If not, follow the same on/off steps as before (5 second intervals)



- 22. Shut down 360 and computer. Disconnect 360 from the computer.
- 23. Turn back on all of your onboard SATA and IDE ports.
- 24. Reassemble 360.
- 25. Insert back-up into 360 and play.